

# PRODUCT INFORMATION PACKET

Model No: 213TTDBD6007

Catalog No: GT0418A

10 HP, Close-Coupled Pump Motor, 3 phase, 3600 RPM, 230/460 V, 213JM Frame, Drip Proof  
JM Motors



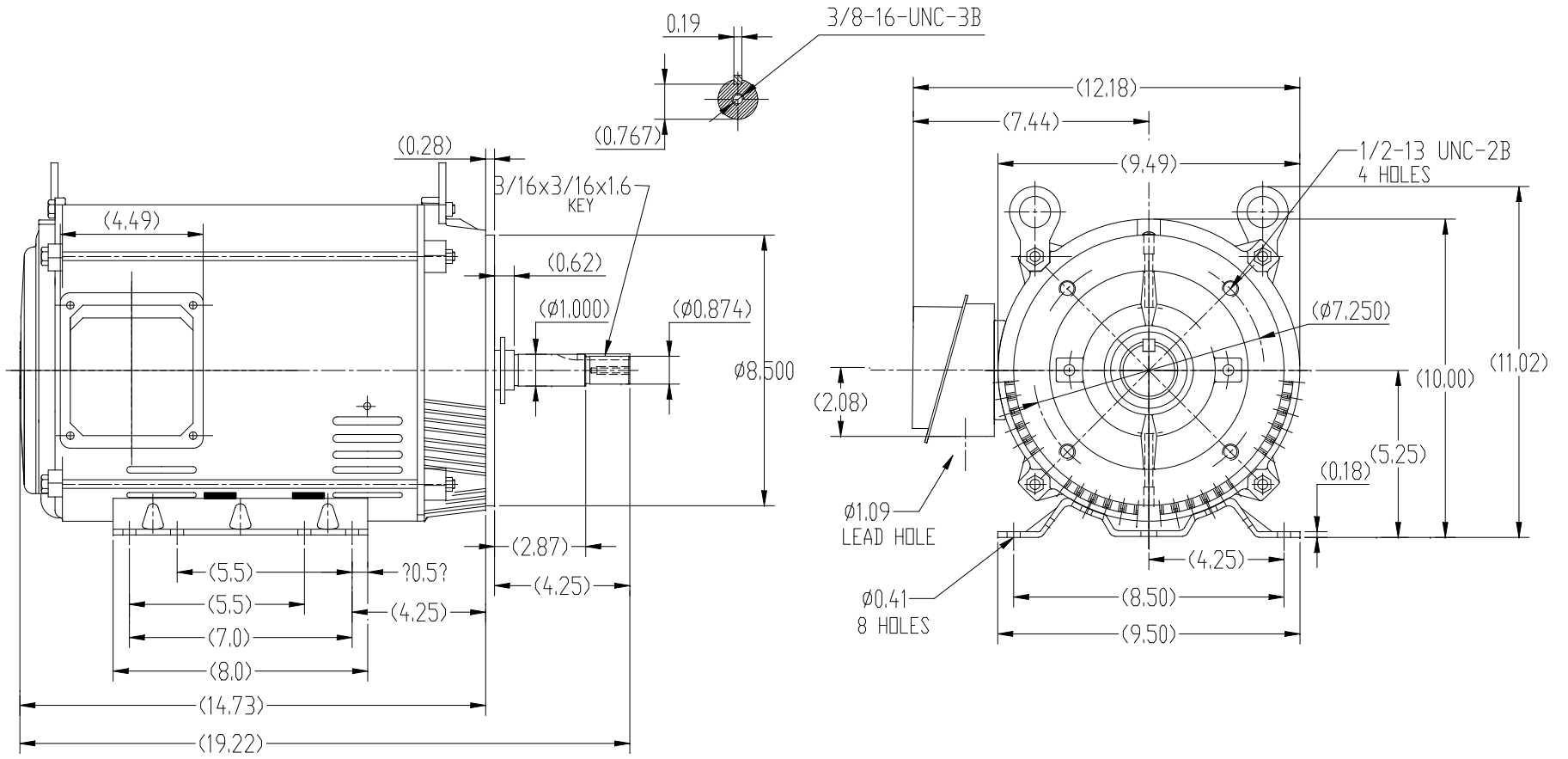
### Nameplate Specifications


Output HP	10 Hp	Output KW	7.5 kW
Frequency	60 Hz	Voltage	230/460 V
Current	24.2/12.1 A	Speed	3520 rpm
Service Factor	1.15	Phase	3
Efficiency	89.5 %	Power Factor	86.1
Duty	Continuous	Insulation Class	F
Design Code	B	KVA Code	G
Frame	213JM	Enclosure	Drip Proof
Thermal Protection	No	Ambient Temperature	40 °C
Drive End Bearing Size	6309	Opp Drive End Bearing Size	6206
UL	Recognized	CSA	Y
CE	Y	IP Code	22

### Technical Specifications

Electrical Type	Squirrel Cage Inverter Rated	Starting Method	Line Or Inverter
Poles	2	Rotation	Reversible
Resistance Main	1.52 Ohms	Mounting	Rigid Base
Motor Orientation	Horizontal	Drive End Bearing	Ball
Opp Drive End Bearing	Ball	Frame Material	Rolled Steel
Shaft Type	JM	Overall Length	19.22 in
Frame Length	11.15 in	Shaft Diameter	0.874 in
Shaft Extension	4.53 in	Assembly/Box Mounting	F1/F2 CAPABLE
Outline Drawing	SS620792	Connection Drawing	EE7308

This is an uncontrolled document once printed or downloaded and is subject to change without notice. Date Created:01/02/2021



		TOLERANCES UNLESS SPECIFIED		 <b>REGAL-BELOIT CORPORATION</b>	DRAWN						
		DEC.	INCHES		CHK						
		.X	±.1		ZYH 4-1-2017						
		.XX	±.03		HZJ 4-1-2017						
		.XXX	±.005	TITLE	APPD CL 4-1-2017						
		.XXXX	±.0005	OUTLINE	SCALE 1=5						
				213/215T FR-JM-ROLLED STEEL	REF						
				MAT'L.	FMF WUXI						
				FINISH	PREV						
NO.	REVISION	BY & DATE	CHK	ANG	±1/2	FINISH	CAD FILE	DP JM 213-215	SIZE	DRAWING NO.	REV.
THIS DRAWING IN DESIGN AND DETAIL IS OUR PROPERTY AND MUST NOT BE USED EXCEPT IN CONNECTION WITH OUR WORK ALL RIGHTS OF DESIGN AND INVENTION ARE RESERVED THIS IS AN ELECTRONICALLY GENERATED DOCUMENT - DO NOT SCALE THIS PRINT											
			RFP						B	SS620792	
			DIST								

EE7308

THREE PHASE  
DUAL VOLTAGE MOTOR



VIEW OF TERMINAL END

REF.  
WINDING DIAGRAM

T8Y, T2Y, T2BL, T4BX, T2EC, T2G  
T6BZ, T2B, T6BL, T4AV, T6B, T4B

OPTIONAL CORD  
CONNECTION

L1 — WHITE  
L2 — RED  
L3 — BLACK

NO.		REVISION		BY & DATE		CHK		ANG		FINISH		PREV	
5	CHG TO REGAL LOGO	SL	09/10/2015	AB									
4	REVISED IEC NOTATIONS	MSG	11/15/2011	CMN	.X	±.1							
3	ADDED IEC NOTATIONS... (U1), (V1) ETC. MU95194	MSG	5/10/2010	MJS	.XX	±.02							
2	ADDED THE OPTIONAL CORD CONNECTION MU46318	RDH	04/24/2003	DRS	.XXX	±.005							
1	REDRAWN	RM	11/20/1990		.XXXX	±.0005							
THIS DRAWING IN DESIGN AND DETAIL IS OUR PROPERTY AND MUST NOT BE USED EXCEPT IN CONNECTION WITH OUR WORK ALL RIGHTS OF DESIGN AND INVENTION ARE RESERVED THIS IS AN ELECTRONICALLY GENERATED DOCUMENT - DO NOT SCALE THIS PRINT		RFP											
		DIST	WP										
										CAD FILE	ee7308	SIZE	A
										DRAWING NO.	EE7308	PAGE	OF
													REV.
													5

**REGAL**™ Regal Beloit America, Inc. DRAWN RM 11/20/1990  
CHK ML 11/21/1990  
APPD SAS 04/24/2003

TITLE CONNECTION DIAGRAM  
3Ø - DUAL VOLTAGE MOTOR  
SCALE 1=1  
REF  
FMF  
PREV



**P.O. BOX 8003  
WAUSAU, WI 54401-8003  
PH. 715-675-3311**

**CERTIFICATION DATA SHEET**

**CUSTOMER:** CUSTOMER  
**ORDER #:** PO #:  
**CONN. DIAGRAM:** EE7308 MODEL #: 213TTDBD6007 A  
**OUTLINE:** SS620792 #:  
**WINDING #:** HE31322016 0 A MOUNTING: F1/F2 CAPABLE

**TYPICAL MOTOR PERFORMANCE DATA**

HP	KW	SYNC. RPM	F.L. RPM	FRAME	ENCLOSURE	KVA CODE	DESIGN	
10&7 1/2	7.50&5.60	3600	3520&2925	213TV	DP	G	B	
PH	Hz	VOLTS	AMPS	START TYPE	DUTY	INSL	S.F.	AMB°C
3	60/50	230/460&190/380	24.3/12.2&22/11	LINE OR INVERTER	CONTINUOUS	F3	1.15/1.15	40

<b>FULL LOAD EFF:</b>	89.5&89.2	<b>3/4 LOAD EFF:</b>	90.9	<b>1/2 LOAD EFF:</b>	89.1	<b>GTD. EFF</b>	88.5	<b>ELEC. TYPE</b>	SQ CAGE INV RATED
<b>FULL LOAD PF:</b>	86&86	<b>3/4 LOAD PF:</b>	81.9	<b>1/2 LOAD PF:</b>	72.2				

<b>F.L. TORQUE</b>	<b>LOCKED ROTOR AMPS</b>	<b>L.R. TORQUE</b>	<b>B.D. TORQUE</b>	<b>F.L. RISE°C</b>
14.9 LB-FT	146 / 73	25 LB-FT	168 %	40 LB-FT 268 %
				0

<b>SOUND PRESSURE @ 3 FT.</b>	<b>SOUND POWER</b>	<b>ROTOR WK^2</b>	<b>MAX. WK^2</b>	<b>SAFE STALL TIME</b>	<b>STARTS / HOUR</b>	<b>APPROX. MOTOR WGT</b>
75 DBA	85 DBA	0.42 LB-FT^2	12 LB-FT^2	10 SEC.	2	100 LBS.

**\*\*\* SUPPLEMENTAL INFORMATION \*\*\***

DE BRACKET TYPE	ODE BRACKET TYPE	MOUNT TYPE	ORIENTATION	SEVERE DUTY	HAZARDOUS LOCATION	DRIP COVER	SCREENS	PAINT
STANDARD	STANDARD	RIGID	HORIZONTAL OR SHAFT DOWN	FALSE	NONE	FALSE	RODENT	BLUE (ENAMEL)

BEARINGS		GREASE	SHAFT TYPE	SPECIAL DE	SPECIAL ODE	SHAFT MATERIAL	FRAME MATERIAL
DE	ODE						
BALL	BALL	POLYREX EM	T	NONE	NONE	1045 HOT ROLLED (C-204)	ROLLED STEEL
6307	6202						

THERMO-PROTECTORS				THERMISTORS	CONTROL	SPACE HEATERS
THERMOSTATS	PROTECTORS	WDG RTDS	BRG RTDS	NONE	FALSE	NONE
NONE	NOT	NONE	NONE			

**INVERTER**

TORQUE: CONSTANT 20:1/VARIABLE 20:1

INV. HP SPEED RANGE: NONE

<b>ENCODER:</b>	NONE
	NONE
	PPR

<b>BRAKE:</b>	NONE	NONE
	NONE	P/N NONE
	NONE	NONE
	FT-LB	NONE V NONE
		NONE
		Hz

\*  
N  
O  
T  
E  
S

\*

**PREPARED BY:** Fareeda Dudekula

**DATE:** 05/04/2018 06:43:53 AM

**FORM:** 3531 REV.3 02/07/99

**\*\* Subject to change without notice.**

**MARATHON ELECTRIC CORPORATION**

TYPICAL PERFORMANCE CURVE for AC MOTOR

Customer

Curve at

460

Volts

HP 10&7.5

PHASE 3

Model No 213TTDBD6007

60

HZ

VOLTS 230/460&190/380

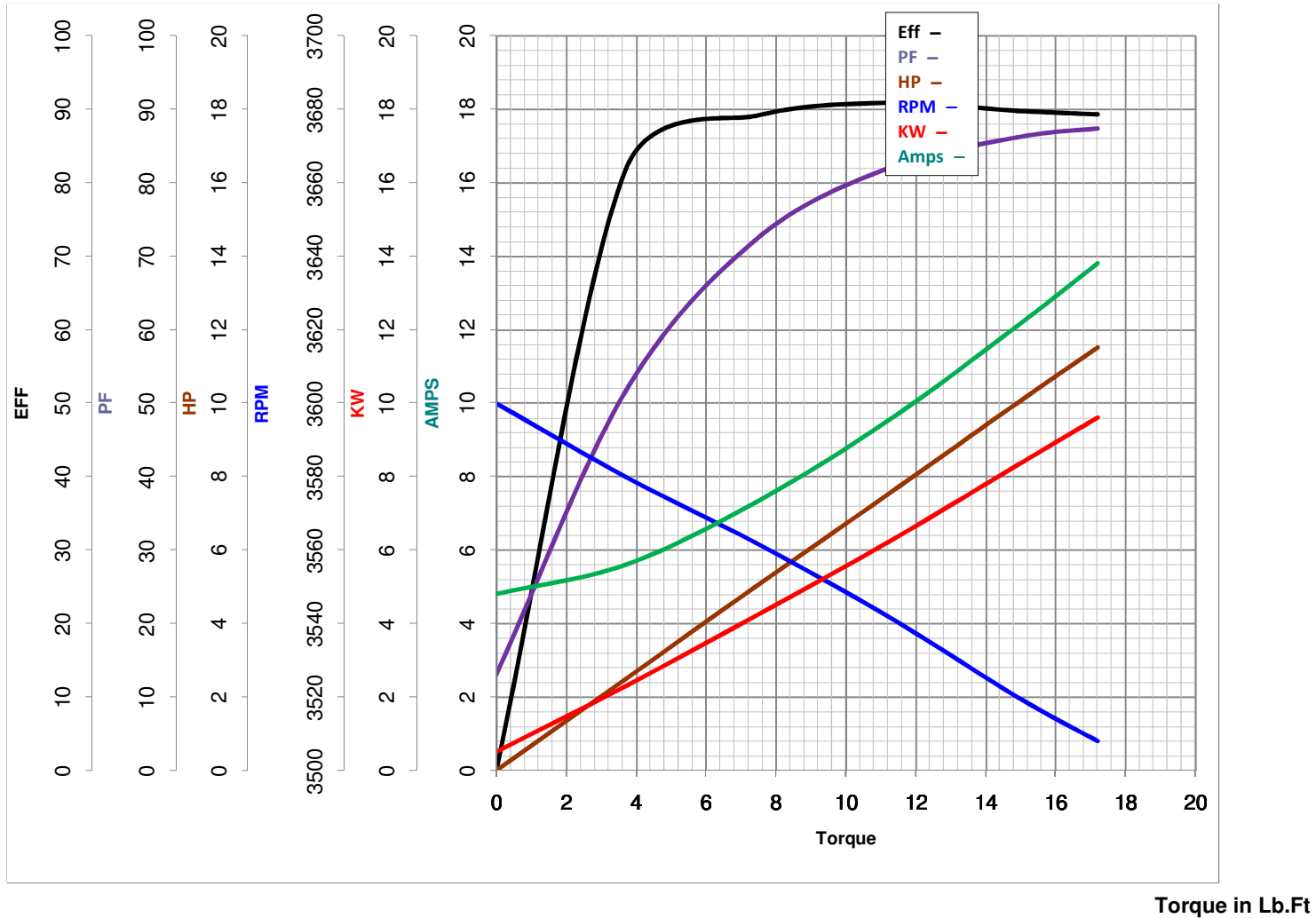
10

HP

Catalog No GT0418A

HZ 60&50

RPM 3520&2925



FL TORQUE 14.9 Lb.Ft  
 BD TORQUE 40.0 Lb.Ft  
 LR TORQUE 25 Lb.Ft

FL AMPS 24.3/12.2  
 PU TORQUE 21.3 Lb.Ft  
 LR AMPS 73

WINDING HE31322016-0 Prepared By FAREEDA

Date 5/4/2018